

Customer :

customer

Customer part :

customer part

Comment :

Comment

S1=0.73

S2=12.13

Tmax=442

Tp S2=481.0

PI=0.06

HI=241

Sample =9107

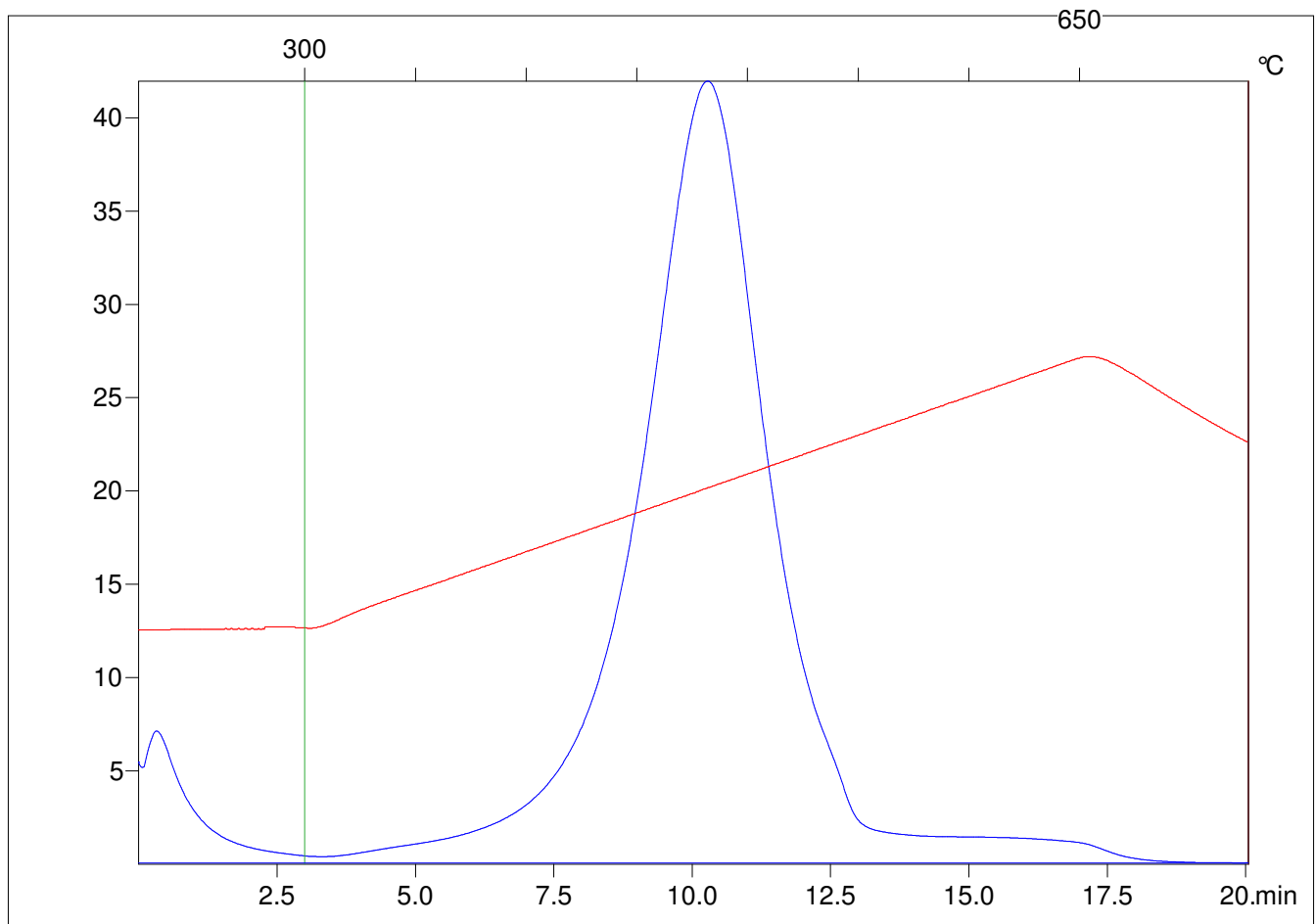
Method =Bulk Rock

Cycle=Basic

KFID(10*9)=1167

Qty =70.6

TOC=5.04



C:\VINC\PK141015\PK088.R00 : FID pyrolysis graphic

State

Pyro Status

Oxi Status